

VEB TYPENFABRIK

ALPHABET

BAUKLOTZ

KOLLEKTIV HENSELMANN

MARZAHN

BRIGADE GROTEWOHL

A	B	C	D	E	F	G	H	I	J	K	L	M	N	O	P	Q	R	S	T	U	V	W
X	Y	Z	A	B	C	D	E	F	G	H	I	J	K	L	M	N	O	P	Q	R	S	T
U	V	W	X	Y	Z	0	1	2	3	4	5	6	7	8	9	!	?	@	#	\$	%	&
'	()	'	+	,	-	.	/	:	;	<	=	>	■	()	^	_	`	{		~
À	Á	Â	Ã	Ä	Å	Ö	Ø	À	Á	Â	Ã	Ä	Å	Ç	È	É	Ê	Ë	Ì	Í	Î	Ï
Ò	Ó	Ô	Õ	Ö	Ù	Ú	Û	Ü	Ý	Þ	Ë	Ï	Ñ	Ò	Ó	Ô	Õ	Ö	×	÷	™	°
Æ	Ð	Ñ	Þ	ŷ	µ	σ	π	ε	ζ	η	ι	κ	λ	μ	ν	ξ	ο	π	ρ	σ	τ	υ
φ	ψ	ω	α	β	γ	δ	ε	ζ	η	θ	ι	κ	λ	μ	ν	ξ	ο	π	ρ	σ	τ	υ
ϕ	ψ	ω	α	β	γ	δ	ε	ζ	η	θ	ι	κ	λ	μ	ν	ξ	ο	π	ρ	σ	τ	υ
ϕ	ψ	ω	α	β	γ	δ	ε	ζ	η	θ	ι	κ	λ	μ	ν	ξ	ο	π	ρ	σ	τ	υ

Font includes following glyphs

LOREM IPSUM DOLOR SIT AMET, CON-
SECTETUER ADIPISCING ELIT, SED DIAM
NONUMMY NIKH EUISMOD TINCIDUNT
UT LABREET DOLORE MAGNA ALIQUM
ERAT VOLUTPAT. UT WISI ENIM AD MINIA
VENIAM, QUIS NOSTRUD EXERCITATION
ULLACORPER SUSCIPIT LOBORTIS NISL
UT ALIQUIP EX EA COMODO CONSEQUAT.
QUIS AUTEM VEL EUM IRIURE DOLOR IN
HENDREIT IN VULPUTATE VELIT ESSE
MOLESTIE CONSEQUAT, VEL ILLUM DOLO-
RE EU FEUGIAT NULLA FACILISIS AT VERO
ET ACCUMSAN ET IUSTO DODIO DIGNISSIM

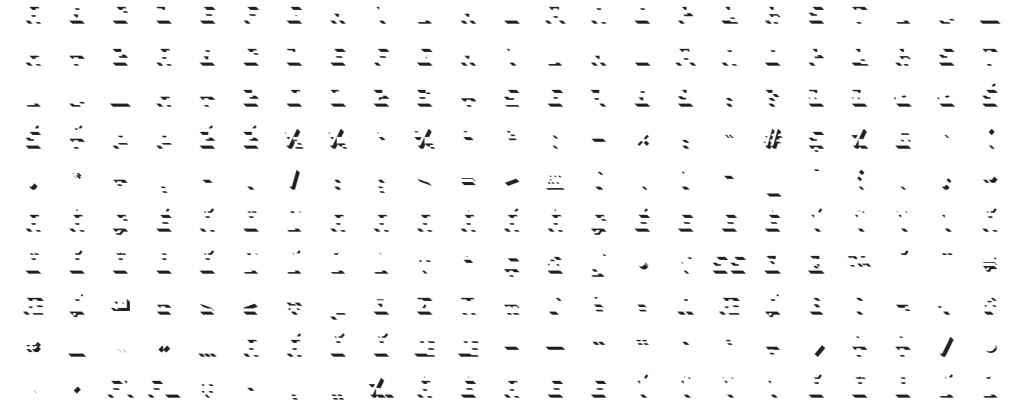
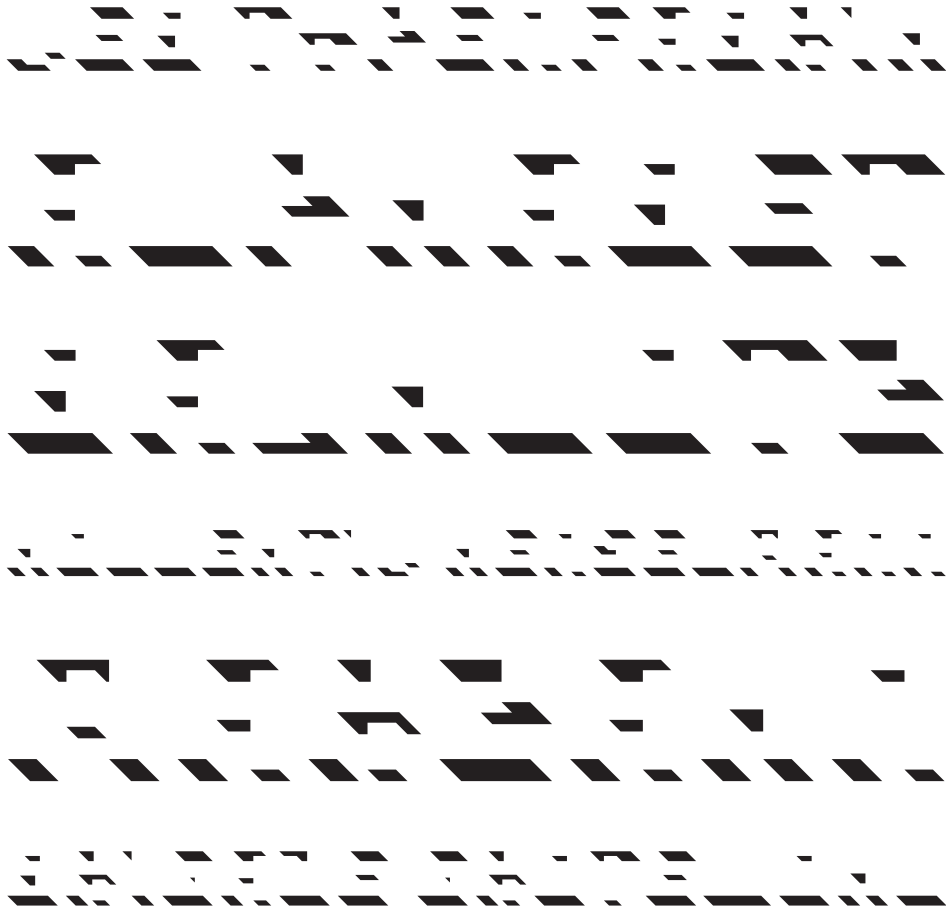
9/12 Pt

LOREM IPSUM DOLOR SIT AMET,
CONSECTETUER ADIPISCING
ELIT, SED DIAM NONUMMY NIKH
EUISMOD TINCIDUNT UT LAB-
REET DOLORE MAGNA ALIQUM
ERAT VOLUTPAT. UT WISI ENIM
AD MINIA VENIAM, QUIS NO-
STRUD EXERCITATION ULLAM-
CORPER SUSCIPIT LOBORTIS
NISL UT ALIQUIP EX EA COMO-
DO CONSEQUAT. QUIS AUTEM VEL

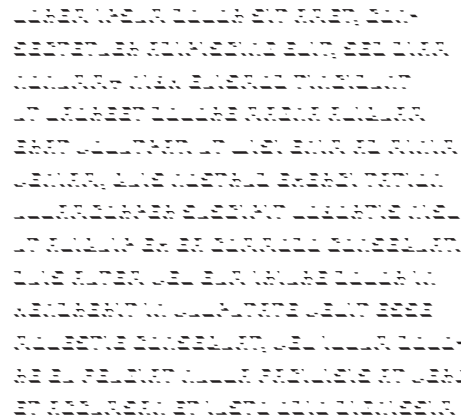
12/14,5 Pt

THE QUICK BROWN FOX JUMPS OVER THE LAZY DOG. SYLVIA WAGT QUICK DEN JUN
BEI PFORZHEIM. VOYEZ LE BRICK GEANT QUE J'EXAMINE PRES DU WHARF. LOREM
IPSUM DOLOR SIT AMET, CONSECTETUER ADIPISCING ELIT LOREM IPSUM DOLOR

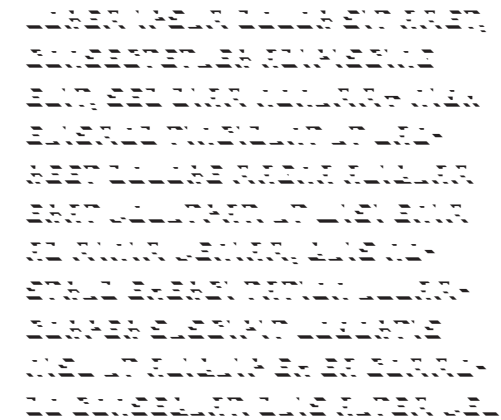
20/26 Pt



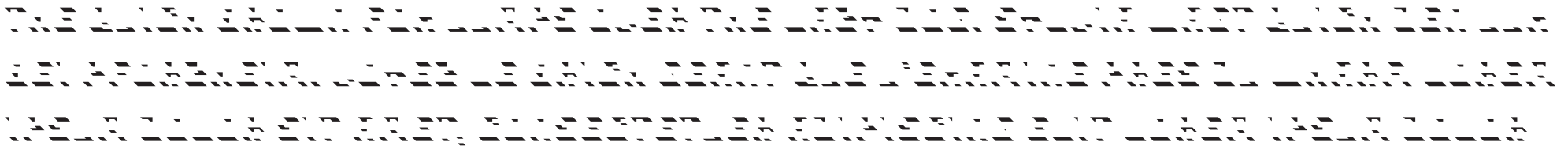
Font includes following glyphs



9/12 Pt

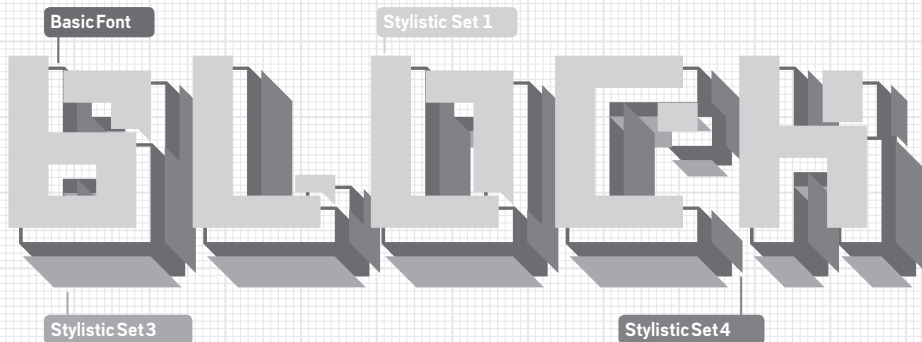
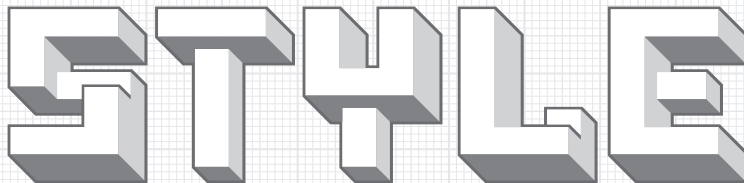
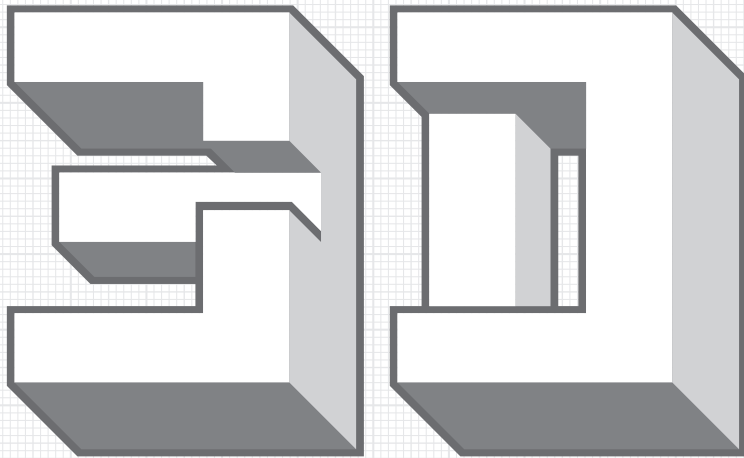


12/14,5 Pt



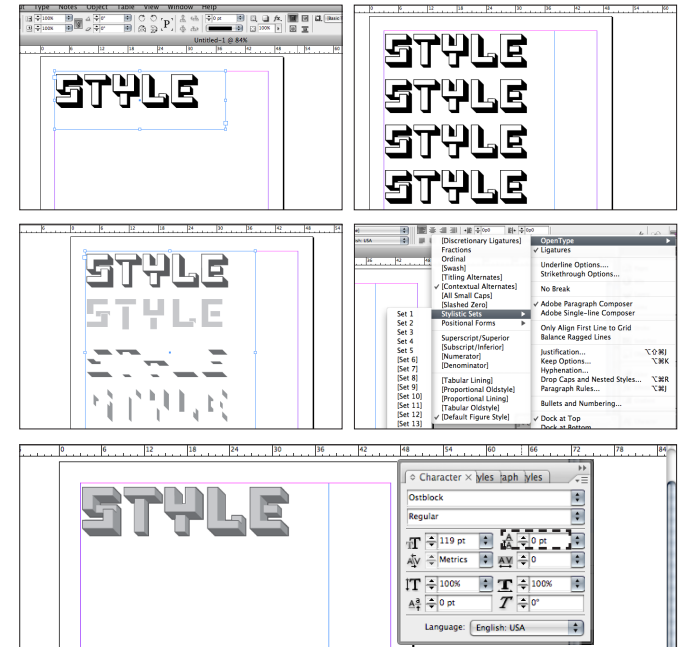
20/26 Pt

OSTBLOCK is a OpenType font with 5 Stylistic Sets to build 3D characters. It works with InDesign or Illustrator.



InDesign

1. Write your word or headline. Copy the text into the next line. Make as many lines as layers you want to use.
2. Activate a line and choose a Stylistic Set in the OpenType menu. Choose a color for the layer. Do the same with all lines.
3. Activate all the text and set the line height to zero. Voilà!



Illustrator

In Illustrator you get access to the stylistic alternates with the Glyph panel. Write your text in OSTBLOCK, then open "Type > Glyphs".

Select a character and click at the little triangle in the right corner. Now you can see all stylistic alternates of this character. Double click to get it.

You also can select a character and choose option 'Alternates for Current Selection' in the Glyph panel.

This way works in InDesign also.

